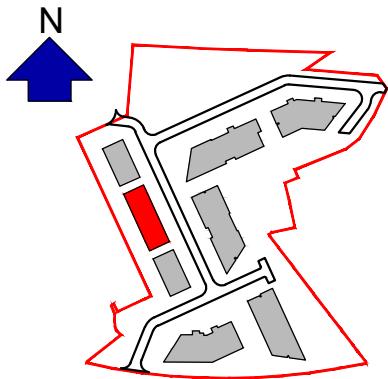


Duplex Type H1_Second floor plan

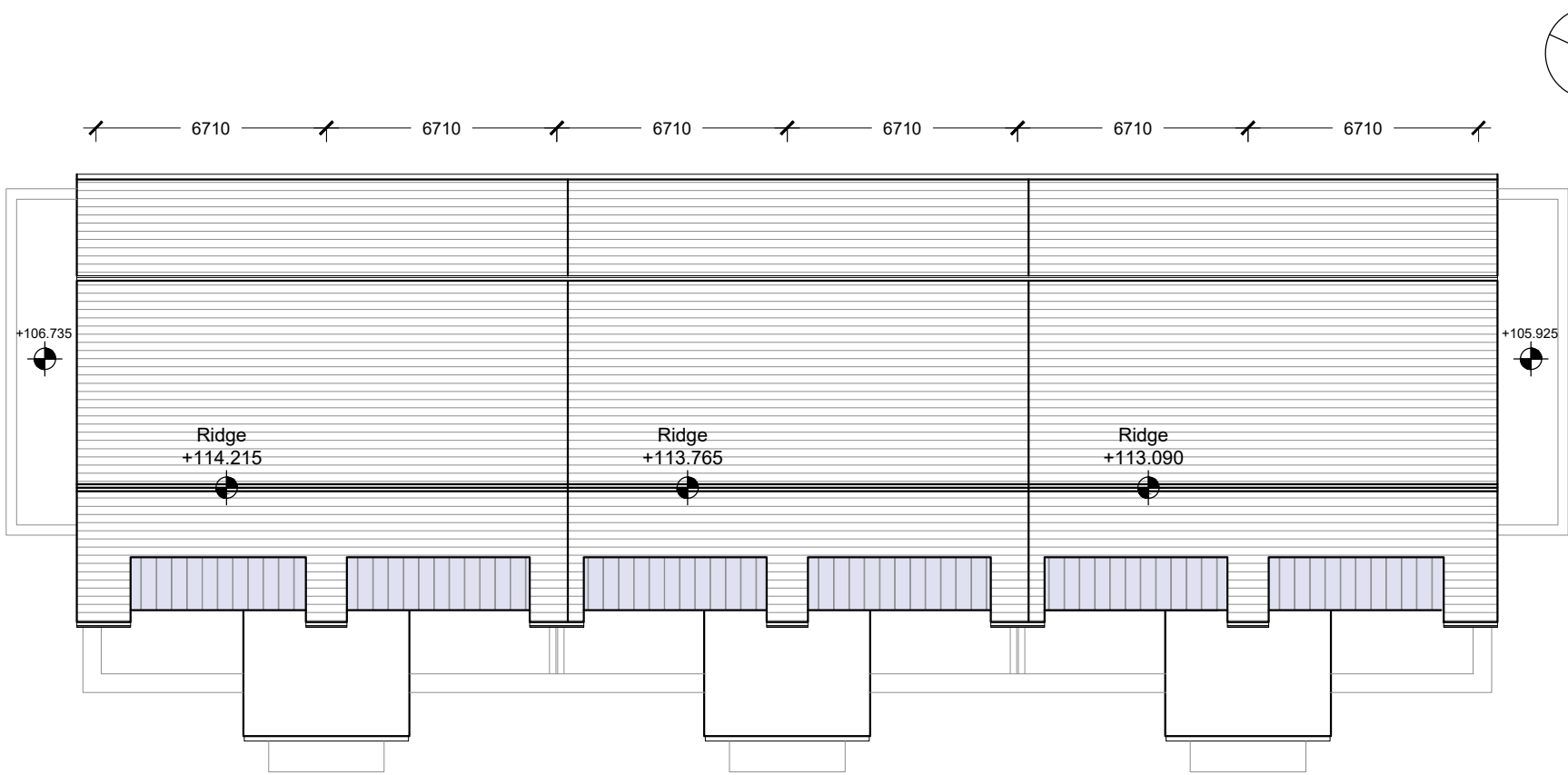
Scale 1:200 @ A3



Keyplan

Key plan

Scale 1:5000



Duplex Type H1_Roof plan

Scale 1:200 @ A3

- GENERAL NOTES
1. COPYRIGHT RESERVED
 2. DO NOT SCALE DRAWING. USE FIGURED DIMENSIONS ONLY.
 3. ALL DISCREPANCIES TO BE REPORTED TO ARCHITECT.
 4. THE CONTRACTOR IS RESPONSIBLE FOR CHECKING ALL LEVELS AND DIMENSIONS.
 5. ALL STRUCTURE TO BE TO STRUCTURAL ENGINEERS DETAILS.
 6. ALL MECH & ELEC SERVICES TO BE SERVICES ENGINEERS DETAILS.
 7. ALL PROPRIETARY ITEMS TO BE INSTALLED IN ACCORDANCE WITH MANUFACTURERS INSTRUCTIONS.
 8. CONTRACTOR IS RESPONSIBLE FOR THE COORDINATION OF STRUCTURE FINISHES AND SERVICES.

REV	DATE	DESCRIPTION	BY

2 Bed Apartment

Type H1 (Duplex)

H1-GF Unit (2 bed)

Upper Ground Floor 77.4 sqm

Total 77.4 sqm

H1-Upper Unit (2 bed)

First Floor 51.4 sqm

Second Floor 44.0 sqm

Total 95.4 sqm



JOHN FLEMING
ARCHITECTS
The Tree House
17 Richview Office Park, DUBLIN 14.
T: (01) 6689888 E: info@jfa.ie W: www.jfa.ie

CLIENT
Ardstone Homes Ltd.

PROJECT
White Pines East SHD

Stocking Ave

DRAWING
Duplex Unit H1
Second floor and roof plans

SCALE	JOB NO.
1:200@A3	1941
DRAWN BY	EH
DATE	March 2021
DRAWING NUMBER	REVISION
WPE-JFA-00-H1-DR-A-P2007	-

DRAWING LOCATION
w:\19 Jobs\1941\03-planning\31 planning application\31.2.dwg

DRAWING STATUS
Planning

Scale 1:200

[m]

